

# Hawke's Bay Visitor Guide



The world's newest  
Great Wine Capital



# Welcome

Welcome to New Zealand's Food and Wine Country. Renowned as a foodies' playground, Hawke's Bay is one of Aotearoa's most desirable culinary destinations and is officially recognised as a Great Wine Capital of the World.

With fertile soils and a warm temperate climate, it boasts thousands of acres of farms, orchards and vineyards, and is headed by a stable of award-winning winemakers, chefs and purveyors. A region of diverse and magnificent landscapes, Hawke's Bay beckons travellers to explore.

**SCAN ME**  
TO FIND OUT MORE



# Tiaki Promise

The Tiaki Promise is a commitment to care for New Zealand, for now and for future generations. In Hawke's Bay Food and Wine Country our whenua (land) is precious, and everyone who lives and travels here has a responsibility to look after it.



TIAKI MEANS TO CARE FOR PEOPLE AND PLACE. THE TIAKI PROMISE IS A COMMITMENT TO CARE FOR NEW ZEALAND, FOR NOW AND FOR FUTURE GENERATIONS.

HOW TO CARE FOR NZ:



BE  
PREPARED



DRIVE  
CAREFULLY



KEEP NZ  
CLEAN



PROTECT  
NATURE



SHOW  
RESPECT

TIAKINEWZEALAND.COM  
#TIAKIPROMISE

# Great Wine Capital of the world

**Hawke's Bay, and the twin cities of Hastings and Napier, was awarded Great Wine Capital status in 2023.**

Members of this global network are recognised as the world's finest winery tourism regions, and Hawke's Bay now sits alongside 11 other prestigious wine destinations such as Bordeaux (France), Napa Valley (USA), Bilbao (Spain) and Adelaide (Australia).

Admission to the Great Wine Capitals Global Network follows a stringent selection process. It requires a region to be truly excellent in a global context. Hawke's Bay was unanimously accepted by the existing member regions, and is now New Zealand's Great Wine Capital.

Each Great Wine Capital presents annual Best of Wine Tourism awards, celebrating innovation and excellence in wine tourism. You can find out more about Hawke's Bay's award winners at [hawkesbaygreatwinecapital.com](http://hawkesbaygreatwinecapital.com) or by scanning the QR code below.







# Great Wine Capitals

GLOBAL NETWORK

---

A WORLD OF EXCELLENCE



# Getting Here

Hawke's Bay can be easily accessed by road, sea and air. Direct flights from Auckland, Wellington and Christchurch fly daily to Hawke's Bay, while Napier Port is well visited by cruise ships during warmer months.

Touring routes connect Hawke's Bay by road, via the Thermal Explorer Highway from the north, the Pacific Coast Highway from the north-east, and the Classic New Zealand Wine Trail from the south.



# Getting Around

Hawke's Bay is easy to discover by bike and car. Limestone cycleways crisscross the region, while the regional goBay service operates seven days a week. Taxi, shuttle and rideshare services are also available.

Find your way with a map from one of the onsite Visitor Information Centres in Wairoa, Napier, Hastings and Havelock North. Visitor information can also be found at Te Huinga Wai, in Waipukurau.



# Central Hawke's Bay

Home to historic villages and majestic homesteads, charming wineries and some of New Zealand's most spectacular countryside, Central Hawke's Bay is a gem waiting to be discovered.

This corner of Food and Wine Country blossoms with each season. Explore by bike on the district's well-manicured cycleways. Discover rich Māori heritage, incredible beaches, rugged mountain ranges, or simply sit back and relax in luxurious accommodation. A visit timed during spring will allow you to enjoy the district's annual Spring Fling.





# Hastings District

Grab a coffee from one of our superb urban cafes and begin your Hastings adventure! The beautifully restored CBD, with its street art and retail precincts, offers shopping and premium eateries, with a multitude of wineries just moments away. Explore our cycleways and take in the glorious scenery, from Te Mata Peak to pristine beaches. By night, catch a show or dine with friends at one of Havelock North's acclaimed eateries to conclude your perfect day in Hastings District.



# Napier City

As one of the world's most complete collections of Art Deco-styled buildings, Napier city is an iconic visitor destination and the perfect location from which to start your Hawke's Bay holiday.

This compact city thrums with Art Deco experiences, award-winning restaurants and wineries, exceptional speakeasys and wine bars, easy access to Hawke's Bay's extensive network of cycle trails and picturesque waterfronts where experiences abound.





# Wairoa District

Wairoa (Māori for long river) is the largest town in northern Hawke's Bay, and the gateway for memorable adventures across the district's spectacular, and often untouched, landscapes.

When you've explored the rich heritage of Wairoa township, the jewels of Mōrere, Māhia Peninsula and Te Urewera await. Must Do's include Wairoa Museum, Nga Hua o Mōrere hot springs, Mokotahi Hill and the district's stunning beaches.



# Accommodation

Indulging in Hawke's Bay Food and Wine Country can be tiring work, so finding the perfect place to rest your weary head is essential. With a wide variety of accommodation across the region, there is something to suit all needs and budgets.

From luxury retreats and romantic cottages among the vines, to great motels, hotels, B&Bs, backpackers, apartments and family-friendly holiday parks, Hawke's Bay has it all.





# Art Deco

Napier City is an outdoor art gallery. Following the devastating 7.8 magnitude earthquake in 1931, Napier's citizens rebuilt their city in the style of the time – Art Deco. The result is the highest concentration of Art Deco buildings on Earth.

The Art Deco Trust, based in Napier, takes regular walking tours around the city, or visitors can opt for a Vintage Car Tour and discover how Art Deco spread through Napier's suburbs and onwards to Hastings as well. In February each year, the region steps back in time to the Great Gatsby era for the iconic Art Deco Festival.



# Arts, Culture & Heritage

Hawke's Bay is home to an incredibly array of artists, photographers, designers, musicians and filmmakers.

From art installations in public spaces, to boutique galleries and fashion retailers, there's always something new to discover.

The region's museums and network of heritage trails offer a fascinating glimpse into Hawke's Bay's past.



# Attractions & Family

Families will have a blast in Hawke's Bay with attractions ready to entertain the young and young at heart. Head to Marine Parade and discover Bayskate and Par 2 Mini Golf or feed the penguins at the National Aquarium of New Zealand.

Discover the world's largest, most accessible mainland gannet colony at Cape Kidnappers, meet the bees at Arataki Honey Visitor Centre in Havelock North, or get wet and wild at Splash Planet in Hastings.





# Cycle

Hawke's Bay is a region made for cycling. The Hawke's Bay trails are one of New Zealand's official Great Rides, offering limestone cycleways that connect many of the region's must-do's. Wairoa and Central Hawke's Bay offer picturesque riverside cycling on purpose-built trails.

Well-developed mountain bike parks are conveniently located nearby all major cities and towns, while bike hire and cycle tour operators are well equipped to ensure you have everything you need.





# Events

Hawke's Bay is an events mecca. Celebrate the best of Art Deco, food and wine, music, sports and more as venues across the region light up year-round.

And while the calendar is always busy, highlights include the Art Deco Festival in February, Horse of the Year in March, Hawke's Bay Marathon in May, Spring Fling in September and October and F.A.W.C! Food and Wine Classic in summer, alongside of host of cultural and music events and festivals.



# Food & Wine

Hawke's Bay is New Zealand's Food and Wine Country and a Great Wine Capital of the world.

With varied terroir, Hawke's Bay is New Zealand's oldest wine-growing region and an agricultural powerhouse that attracts passionate producers, artisans and urban restaurateurs who deliver New Zealand's foremost array of provenance-led, culinary experiences.

The region's unrivalled bounty ensures visitors experience the full gamut of paddock to plate, grape to glass and tree to table feasting throughout all corners of the region.



# Landscapes & Nature

Hawke's Bay is blessed with 360km of coastline to the east, craggy mountain ranges to the west, and a climate conducive to year-round exploration.

A natural playground, Hawke's Bay offers visitors stunning beaches, braided rivers, mountainous forest parks, starkly beautiful waterfalls and wetlands, lush countryside, and beautifully manicured public gardens.





# Māori Culture

Hawke's Bay is known to Māori as Te Matau-a-Māui / The Hook of Māui, in reference to the early navigator Māui, who bestowed the first placenames to the region over 1000 years ago.

Mythical legends play an important role in the transmission of oral histories in Māori culture and Hawke's Bay has a rich heritage of Māori pūrākau (myths and legends).

Much of this can be experienced first-hand through a visit to one or more of the many cultural sites. Most are open to the public year-round, while others can be enjoyed as part of a Māori tourism experience.





# Recreation

With a breadth of outdoor experiences, it stands to reason that sporting and recreation is high on the to-do list in Hawke's Bay.

Golf in Hawke's Bay ranges from world-class, links-style courses to smaller, nine-hole country club courses. Cyclists and runners will enjoy the Hawke's Bay Trails that zigzag across the region, while visitors keen on a spot of rafting, tramping, trout fishing and hunting can head for the Kaweka and Ruahine ranges. Māhia is a haven for those who love fishing and surfing.



# Tours

Whether basking in the region's incredible landscapes, taking part in wildlife tours, discovering cultural and heritage experiences, sipping your way across the Great Wine Capital or savouring the food, Hawke's Bay's tours are as diverse as the region itself.

Thankfully, wherever you find yourself in Hawke's Bay, passionate guides will ensure you enjoy their hometown, and are always ready and willing to share their favourite tips for Hawke's Bay.



# Walking & Hiking

From easy strolls to multi-day tramps, walking will take you to some of Hawke's Bay's most beautiful spots. Urban walks connect easily to the Hawke's Bay's Trails for scenic exploring, while the Department of Conservation's well-established network of tracks and trails will reward walkers with stunning vistas and nature aplenty.

Highlights include the iconic lookout, Bell Rock, north of Napier, Sunrise Hut in Central Hawke's Bay, Te Mata Park in Hastings and Lake Waikaremoana in Wairoa, where an array of walks abound.







## HASTINGS VISITOR INFORMATION CENTRE



## WE CAN HELP MAKE YOUR HAWKE'S BAY VISIT MEMORABLE

The isite Visitor Information Centres are your go-to for great advice on activities, show bookings, transport, and more. The friendly teams at Hastings and Havelock North isites are ready to help with accommodation, attractions, and insider tips to make your stay in Hastings and the Hawke's Bay region unforgettable. Plus, explore the selection of unique locally made and inspired gifts and merchandise.



### Hastings isite

Ground Floor,  
Municipal Building,  
Heretaunga Street East  
Tel: 0800 HASTINGS

#### Opening hours:

Monday-Friday 9am-5pm  
Saturday 9am-3pm  
Sunday 10am-2pm

### Havelock North isite

1 Te Aute Road

#### Opening hours:

Monday-Saturday 10am-3pm  
Sunday 10am-2pm

f @hastingsnz

@hastings\_nz







**NAPIER**

# Book your Hawke's Bay adventure with our experts.

Accommodation, bike hire,  
activities and more, with  
no booking fees.



0800 84 74 88 • [napiernz.com](http://napiernz.com)  
100 Marine Parade, Napier

## Black Barn Retreats

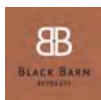
Havelock North

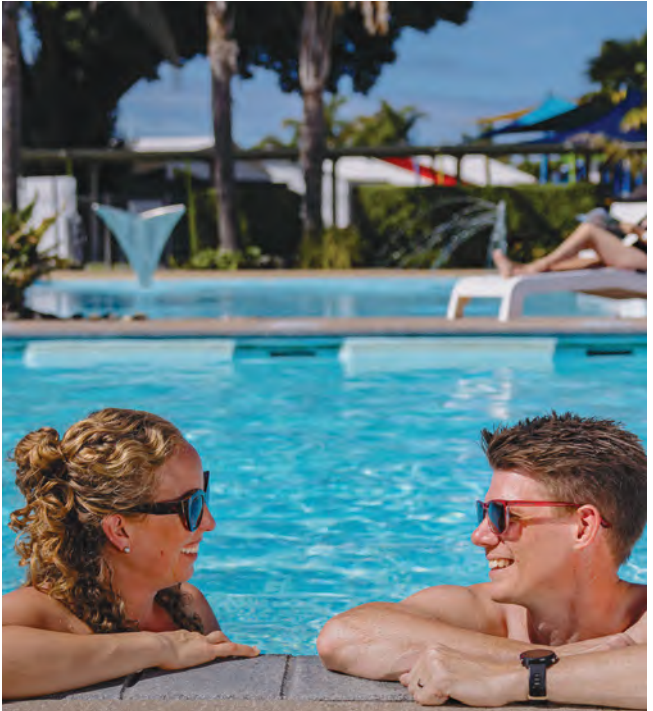


Black Barn Vineyards offers 17 luxury retreats for nightly vacation rentals. Each lodge is self-contained, providing a private, exclusive experience. Whether you're seeking a peaceful escape or a base for exploring the stunning region, our accommodations blend comfort and elegance. Each retreat is uniquely styled, from vineyard cottages to modern lodges with breathtaking views. Spacious living areas, fully equipped kitchens, and luxurious bedrooms make them ideal for both short getaways and extended stays.

Located in the heart of Hawke's Bay, known for its natural beauty, wineries, and vibrant arts scene, Black Barn is close to local beaches, Te Mata Peak, Napier's Art Deco district, and award-winning restaurants. Enjoy the perfect balance of relaxation and adventure. Book your stay today!

**A** 34 Black Barn Road, Havelock North  
**P** +64 6 877 7985  
**E** [retreats@blackbarn.com](mailto:retreats@blackbarn.com)  
**W** [blackbarn.com](http://blackbarn.com)





# LOVE YOUR STAY IN THE HEART OF HAWKE'S BAY

Make happy memories in your home away from home. Space to play, space to relax, space for quality time. It's your holiday; do it your way.



**KENNEDY PARK**  
RESORT NAPIER

11 Storkey St, Napier  
[kennedypark.co.nz](http://kennedypark.co.nz)





## Mangapapa Hotel

Havelock North,



Elegance, seclusion, relaxation...three words which describe this stunning luxury boutique hotel & accommodation. Surrounded by landscaped century old trees, gardens and orchards, Mangapapa Hotel offers the finest luxury accommodation in Hawke's Bay with its twelve magnificent suites. Together with the renowned restaurant, day spa & wellness sanctuary and facilities such as the pool and lawn tennis court, Mangapapa is Hawke's Bay's ultimate luxury country estate... a destination in itself!

**STAY:** The hotel boasts twelve spacious stunning light filled rooms, all unique in their own individual way. **RESTAURANT:** Celebrating and showcasing the finest of local ingredients. **DAY SPA & WELLNESS SANCTUARY:** Our serene Spa Sanctuary is the perfect place to relax, unwind and indulge for a day or afternoon of pampering.

**A** 466 Napier Road, Havelock North  
**P** +64 6 878 3234  
**E** [luxury@mangapapa.co.nz](mailto:luxury@mangapapa.co.nz)  
**W** [mangapapa.co.nz](http://mangapapa.co.nz)



## Lawn Road Retreat

Hastings



Lawn Road Retreat provides exceptional accommodation for large groups in Hawke's Bay. The retreat is centrally located, sleeps up to 20 and has 8 to 9 bedrooms. Every bedroom has an ensuite. There are a wide range of amenities at the property making it perfect for multi-gen family and

corporate stays. They include a pizza oven, outdoor fire, pool, hot tub, tennis court, table tennis table, pétanque court, pool table, dart board, volleyball/badminton lawn, croquet lawn, springfree tramp, basketball hoop, cubby house and large playground.

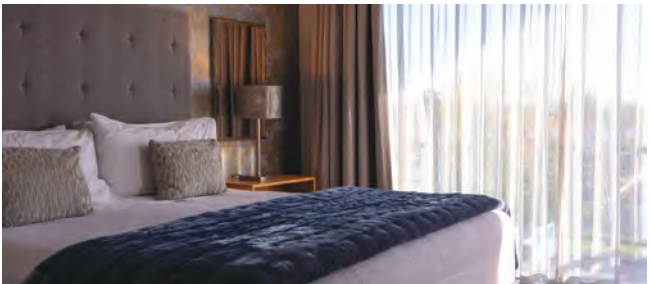
**A** 150 Lawn Road, RD10 Hastings  
**P** +64 21 898 973  
**E** [info@lawnroadretreat.co.nz](mailto:info@lawnroadretreat.co.nz)  
**W** [lawnroadretreat.co.nz](http://lawnroadretreat.co.nz)



Lawn Road Retreat

## Porters Boutique Hotel

Havelock North



Nestled in the heart of Havelock North Village is Porters Boutique Hotel & Conference Centre. Relax in elegantly appointed guest rooms and suites, complete with plush, classic furnishings and adorned with local artwork. Enjoy attentive service within a stylish, intimate space that

reflects the beauty and grandeur of the breathtaking Hawke's Bay region. Porters Boutique Hotel is a 25-minute drive from the Hawke's Bay Airport, and centrally located to some of the region's best restaurants, wineries, cycle trails, golf courses and natural landscapes.

**A** 4 Te Aute Road, Havelock North  
**P** +64 6 877 1234  
**E** [reservations@portershotel.co.nz](mailto:reservations@portershotel.co.nz)  
**W** [portershotel.co.nz](http://portershotel.co.nz)



**P**  
**PORTERS**  
BOUTIQUE HOTEL | CONFERENCE CENTRE  
HAVELOCK NORTH, HAWKE'S BAY

## Swiss-Belhotel Napier

Napier



Swiss-Belhotel Napier stands as the inaugural international 5-star hotel in the heart of Napier. This premium hotel takes pride in offering the most spacious rooms and suites across its 52 options, warmly welcoming both you and your pets. Dive into the gastronomic delights of New Zealand at Saffron

Social Kitchen, a hub spotlighting fresh, local produce. Experience the fusion of intimacy and luxury at a prime location. Enhance your stay by joining our FREE SBEC Loyalty Program, guaranteeing a minimum of 20% off on accommodation and culinary indulgences.

**A** 36 Munroe Street, Napier  
**P** +64 6 280 6080  
**E** [ressqna@swiss-belhotel.com](mailto:ressqna@swiss-belhotel.com)  
**W** [swiss-belhotel.com](http://swiss-belhotel.com)



## The Crown Hotel

Napier



Set in the picturesque seaside village of Ahuriri, with cafes, restaurants, boutique shops and the beachside on your doorstep. Offering 4.5 star waterfront accommodation with 39 guestrooms choose from the elegant heritage suites in the original 1932 Crown Hotel or modern contemporary oceanside rooms.

The hotel offers complimentary undercover carparking, secure bicycle storage, fitness centre, conference/function facilities, restaurant and bar. Situated only minutes from Hawkes Bay's wineries and attractions...relax and indulge at a boutique hotel with timeless charm and genuine personalised service.

**A** Cnr Hardinge Rd & Bridge St, Napier  
**P** +64 6 833 8300  
**E** [reservations@thecrownnapier.co.nz](mailto:reservations@thecrownnapier.co.nz)  
**W** [thecrownnapier.co.nz](http://thecrownnapier.co.nz)





## The Old Church Villa

Napier



Set amongst the private gardens of The Old Church, the beautifully restored 1913 Villa is full of character and opulence. Centrally located to both Napier and Hastings. The Villa sleeps eight guests in four double bedrooms, each with a

private ensuite bathroom. There is a large open plan kitchen, lounge and dining area. The villa has a lush courtyard in the front surrounded by manicured gardens and a back porch overseeing vineyards and Te Mata Peak in the distance.

**A** 199 Meeanee Road, Meeanee, Napier

**P** +64 6 844 8866

**E** admin@ortons.co.nz

**W** theoldchurch.co.nz



## Bluebell Lodge and Cottages

Hastings

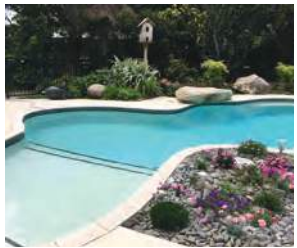
The perfect getaway set in a lovely rural location 5 km from Havelock North/Hastings. Our studio/cottages have air conditioning, SKY TV, free Wifi, Nespresso coffee pod machines, comfy recliner chairs and King or Superking beds.

**A** 137 Longlands Road East, RD2 Hastings

**P** +64 27 220 2262 or +64 6 876 5243

**E** info@bluebell-cottage.co.nz

**W** bluebell-cottage.co.nz



## Scenic Hotel Te Pania

Napier

Scenic Hotel Te Pania presents the best of the Bay with genuine Kiwi hospitality. Our Pacific View rooms, either Twin or King offer wonderful ocean views located on Marine Parade, just a few minutes' walk to Napier CBD.

**A** 45 Marine Parade, Napier

**P** +64 6 833 7733

**E** tepania@scenichotels.co.nz

**W** scenichotelgroup.co.nz



## Te Aratipi Station

Maraetotara

Escape the city and join us at Te Aratipi Station! Immerse yourself in authentic farm life on one of Hawke's Bay's iconic sheep and cattle stations. Enjoy private farm walks, farm golf, curated tours, and unique accommodation. Book your bespoke experience now.

- A** 907 Okaihau Road, RD12, Maraetotara
- P** +64 22 161 3285
- E** [tearatipi@gmail.com](mailto:tearatipi@gmail.com)
- W** [tearatipi.co.nz](http://tearatipi.co.nz)



## Te Awanga Cottages

Te Awanga

Located on the outskirts of Te Awanga, these architecturally designed Cottages were envisioned with relaxation as a priority. Each has stunning views of the surrounding hills and coastline and lush furnishings include a bath with outdoor views. The perfect Hawke's Bay getaway!

- A** 369 Clifton Road, Te Awanga
- P** +64 27 664 3055
- E** [info@teawangacottages.co.nz](mailto:info@teawangacottages.co.nz)
- W** [teawangacottages.co.nz](http://teawangacottages.co.nz)



Impress your conference, meeting or incentive delegates with the bounty of Hawke's Bay, New Zealand's Food and Wine Country and the newest Great Wine Capital of the world.

**Web:** [hawkesbaynz.com/businessesevents](http://hawkesbaynz.com/businessesevents)  
**Email:** [trade@hawkesbaytourism.co.nz](mailto:trade@hawkesbaytourism.co.nz)



## Te Whare Toi o Heretaunga Hastings Art Gallery



**Located in the heart of Civic Square,  
Te Whare Toi o Heretaunga  
presents a lively programme of  
local, national, and international  
contemporary art.**

**Free entry  
Tuesday to Saturday, 10am – 4pm**

**06 871 5095**

**201 Eastbourne St East, Hastings**

**[www.hastingscityartgallery.co.nz](http://www.hastingscityartgallery.co.nz)**

**f i hastingsartgallery**



Photo: Sam Hartnett





**SPLASH PLANET**  
THEME PARK  
HASTINGS!

WHERE THE  
**WAHOOS**  
are!

**OPEN  
FOR  
SUMMER**

**BOOK YOUR DAY  
BEFORE IT'S GONE!**

**OPEN 18 NOVEMBER – 30 MARCH**

For opening hours and prices visit:  
**SPLASHPLANET.CO.NZ**

1001 Grove Road, Hastings

PART OF  
**HERETAUNGA  
HASTINGS** DISTRICT COUNCIL



# Waiaroha

Heretaunga Water  
Discovery Centre



Come and experience the  
wonder of water in the  
middle of Hastings

**Free entry**

Outdoor area - open every day

Te Whare Waiaroha visitor centre -

Mon to Sat, 10am to 4pm

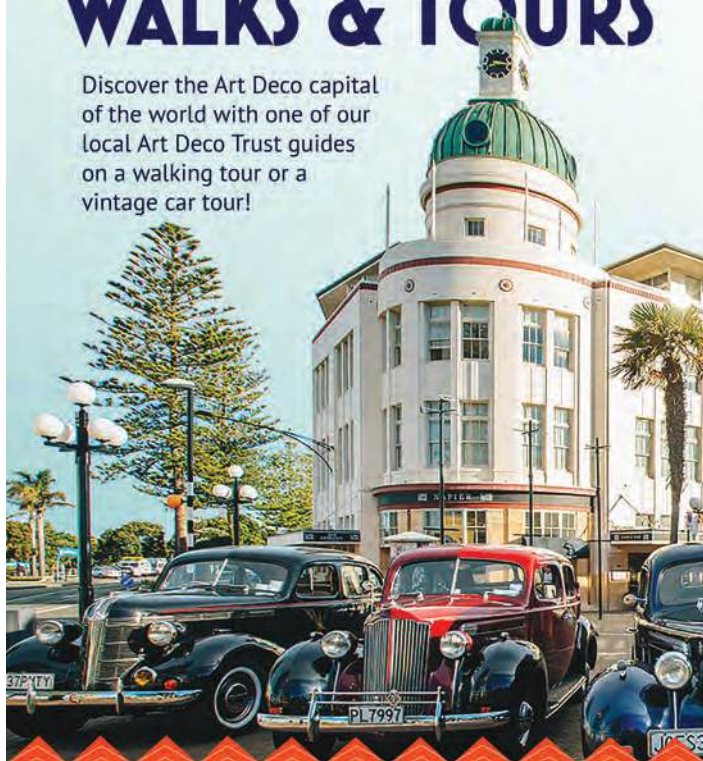
Closed public holidays

[www.waiaroha.co.nz](http://www.waiaroha.co.nz)



# ART DECO NAPIER WALKS & TOURS

Discover the Art Deco capital of the world with one of our local Art Deco Trust guides on a walking tour or a vintage car tour!



**BOOK YOUR TOUR AT ART DECO TRUST**  
7 Tennyson Street, Napier.

P. 06 835 0022 [www.artdeconapier.com](http://www.artdeconapier.com)

#### **SHOP HOURS**

1 October – 31 March: 9am-5pm

1 April – 30 September: 9.30am-2.30pm



## TAKE OUR FAMOUS GUIDED WALKING TOUR

Step back in time with a guided walking tour of Napier's fascinating Art Deco Quarter. Your local guide will regale you with stories of the earthquake that destroyed the city, the people who were affected, and the remarkable recovery and rebuild, which was completed within two years!

All tours include the short film: *The Day That Changed The Bay.*

## BOOK YOUR VINTAGE CAR TOUR

Discover Napier's Art Deco heritage in style in a 1930s vintage car! Your journey will take you through the Art Deco heritage precinct, historic Port Ahuriri, and surrounding landmarks. In chauffeured comfort, discover how Napier transformed its tragic past into an Art Deco architectural wonder.



[artdecofestival.co.nz](http://artdecofestival.co.nz)





# FARADAY

Museum of Technology

**Step into a world where history comes alive! Kids and adults alike love the fascinating Faraday experience.**

## **Packed with gadgets and gizmos:**



A biplane hanging from the ceiling



Explore illusions in the infinity room



Play old school arcade games



Watch the electrifying Tesla Coil



Explore inside a vintage car



Plus loads more!

2b Faraday Street, Napier · [faradaymuseum.co.nz](http://faradaymuseum.co.nz)



Hawke's Bay  
Tai Ahuriri

MTG Hawke's Bay  
is the place to get a  
fresh perspective on  
the region with new  
and familiar stories.



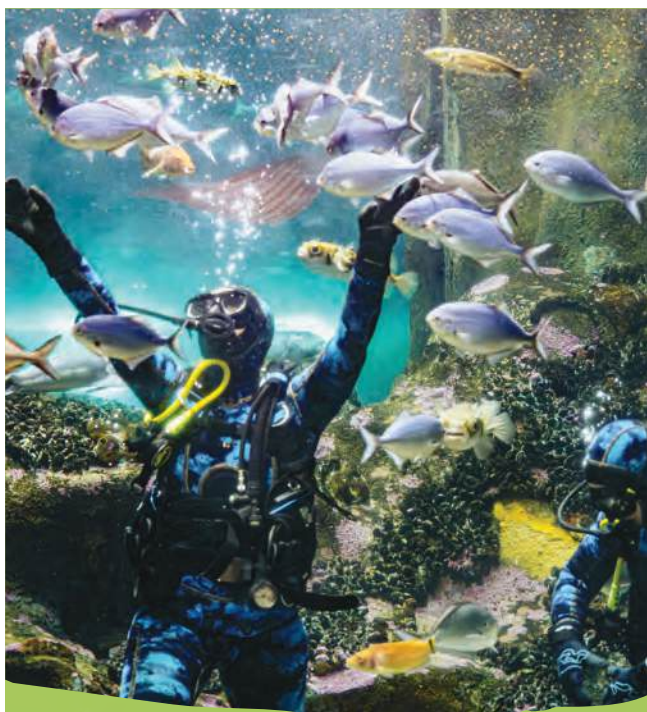
Beaded dress c.1920s, France, 84/95

Visit Hawke's Bay's museum, home of the region's taonga and other treasures. Including permanent exhibitions on 1931 Hawke's Bay earthquake and Kuru Taonga: Voices of Kahungunu. We regularly refresh our gallery spaces so do return to see what is new.



**Visit MTG  
— it's free!**

Open daily 9.30am-5pm  
1 Tennyson Street, Napier  
[info@mtghawkesbay.com](mailto:info@mtghawkesbay.com)  
06 835 7781  
[mtghawkesbay.com](http://mtghawkesbay.com)



## DISCOVER OUR FASCINATING WORLD



Book an Animal Encounter  
Take a Guided Tour  
See Oceanarium Feeding  
Enjoy Penguin Keeper Talks

**NATIONAL  
AQUARIUM**  
OF NEW ZEALAND  
[nationalaquarium.co.nz](http://nationalaquarium.co.nz)

# RELAX & REVITALISE

at Napier's premier  
heated pool and  
fitness complex.



With our spa pools,  
sauna, therapeutic pool  
and heated lap pool, we've  
got something for everyone.

---

Open 7 Days | Marine Parade, Napier  
[oceanspanapier.co.nz](http://oceanspanapier.co.nz)



two  
**18** hole  
courses

**PAR<sup>2</sup>**  
MINIGOLF  
MARINE PARADE

Challenge your  
**FAMILY AND  
FRIENDS**  
**GIVE IT A GO!**

# Tee off with a view!

Open 7 days • Marine Parade, Napier  
[par2golf.co.nz](http://par2golf.co.nz) • 06 834 0248

## Arataki Honey Visitor Centre

Havelock North



We are open seven days a week and are **FREE** to visit. Here you can gain an amazing insight into the honeybee and the honey production together with **FREE** honey tasting of our 12 different varieties - 100% Arataki pure New Zealand honey.

Our onsite hives enable you to explore the life of these busy little creatures up close. See if you can spot a queen bee? In summer it may be possible to watch a beekeeper at work. (Check out our Facebook for details on what's happening.)

**A** 66 Arataki Road, Havelock North

**P** +64 6 877 7300

**E** [shop@aratakihoneyhb.co.nz](mailto:shop@aratakihoneyhb.co.nz)

**W** [aratakihoney.co.nz](http://aratakihoney.co.nz)



## Deco City Discoverer

Napier



We simply love getting you out and about in Hawke's Bay! Take a local highlights tour to some of our region's many landmarks and wineries and have loads of fun on the way. Group and party tours and shuttles in our flagship Art Deco inspired buses 'Veronica' & 'Belle' are a truly unique experience. Each

29-seat bus sports an open rear deck, where you can safely enjoy the views while we drive. Our luxury 20-seat Mercedes or 12-seater vans are ideal for smaller groups. For personalised, private hire our stylish, classic 1954 Daimler Conquest or London Taxi-cab are perfect for weddings or private tours.

**A** 30 Maltby Street, Meeanee, Napier

**P** +64 27 694 4322

**E** [info@decocitydiscoverer.co.nz](mailto:info@decocitydiscoverer.co.nz)

**W** [decocitydiscoverer.co.nz](http://decocitydiscoverer.co.nz)



## Gannet Safaris Overland

Clifton



Experience Hawke's Bay's unique wildlife encounter in one of our 4WD buses taking you overland through Cape Kidnappers Station and NZ's largest privately owned wildlife sanctuary. We bring you to within metres of these remarkable birds with their piercing eye markings and golden crowns. You will be

mesmerised watching them nesting, preening, performing their courtship dance and the chicks are adorable. Tours are 3 hours NO WALKING required - Daily tours (INCLUDING Christmas Day) at 9:30am & 1:30pm from 1st Sept - 30th April 9:30am and 1:30pm Private and Sunrise tours available.

**A** 396 Clifton Road, Te Awanga

**P** +64 6 875 0888

**E** [enquire@gannetsafaris.co.nz](mailto:enquire@gannetsafaris.co.nz)

**W** [gannetsafaris.co.nz](http://gannetsafaris.co.nz)



## Winery Tours Hawke's Bay

Hawke's Bay



Get to the heart of Hawke's Bay wine... Winery Tours Hawke's Bay will take you off the beaten track with an intimate and relaxed tour of boutique wineries. Our passionate, wine-loving tour guides will help you explore and experience the places where the real magic

happens. Talk to the winemakers, learn of the passions, their history and their future. Taste their amazing wines and go behind the scenes to discover what makes their wine unique. We'll take you to taste the real Hawke's Bay.

**A** 807a Riverslea Road South, Hastings

**P** +64 800 946 342 or 0800 WINE HB

**E** [admin@wthb.nz](mailto:admin@wthb.nz)

**W** [winerytourshawkesbay.co.nz](http://winerytourshawkesbay.co.nz)



## Tākaro Trails Cycle Tours

Ahuriri



Are you wanting to explore scenic Hawke's Bay by bicycle? Award-winning Tākaro Trails will get you out cycling on the Hawke's Bay Trails visiting the amazing wineries and experiencing the best of our region. We offer winery tours, accommodation pick-ups, shuttles &

bike drop-offs. Hire a standard bike or electric bike - join us for one day or go on a multiday adventure and really explore the trails.

Give us a call or book online - we can help you have the best day in sunny Hawke's Bay!

**A** 9 Nelson Quay, Ahuriri, Napier

**P** +64 800 825 276

**E** [info@takarotrails.co.nz](mailto:info@takarotrails.co.nz)

**W** [takarotrails.co.nz](http://takarotrails.co.nz)



## On Yer Bike Winery Tours

Hastings



Explore the flavours of the Bridge Pa Triangle and Gimblett Gravels wine districts at your own pace with On Yer Bike Winery Tours. This self-guided tour combines the thrill of biking with the pleasure of wine tasting; whether you're a seasoned quaffer or a casual wine enthusiast,

the wineries you visit cater to all levels. Enjoy a leisurely ride, and immerse yourself in the beauty of the countryside, where every turn reveals a new taste adventure. Book your On Yer Bike experience today - where every sip tells a story!

**A** 2543 State Highway 50, Roy's Hill, Hastings

**P** +64 21 292 8080

**E** [info@onyerbikehb.co.nz](mailto:info@onyerbikehb.co.nz)

**W** [onyerbikehb.co.nz](http://onyerbikehb.co.nz)





Mohaka Rafting

Napier



Enjoy the thrills on our day and multi-day trips on Grade 2, 3, and 5 water. Our most popular adventure is Grade 3 (4+ hours on water) with cliff jumps, gorges, canyons, rapid swims, and a gold mine visit.

Young families will love Grade 2, while serious rafters can tackle the excitement of Grade 5. Visit our website to learn more and book your next adventure!

- A 3408 State Highway 5, Te Pōhue
- P +64 6 839 1808 or +64 27 825 8539
- E info@mohakarafting.co.nz
- W mohakarafting.co.nz



Coastal Wine Cycles

Haumoana

We're a dynamic, young company who embraces relaxed cycling for epic experiences. Our awesome bikes and location create perfect adventures. Explore on Californian beach cruisers with comfy features. Guaranteed: No Wedgies, No Hills, No Backtracking.

- A 6 Beach Road, Haumoana
- P +64 6 875 0302
- E info@winecycles.co.nz
- W winecycles.co.nz



4 x Wheeler Surrey Bike Hire

Haumoana

Cruise the coastal cycle trail, stop at a renowned café or winery while enjoying stunning Cape Kidnappers views! We offer 12 bikes, accommodating up to 30 people, ideal for group bookings like birthdays, staff events, and parties. Min 1-hour hire, half-day slots from 9am-1pm & 1pm-5pm.

- A 32 East Road, Haumoana, Hastings
- P +64 6 875 0244
- W farmyardzoo.co.nz



## The Spa at Rosewood Cape Kidnappers

Te Awanga

The Spa at Rosewood Cape Kidnappers invites you to indulge in luxurious treatments, including a range of massages, facials, and hair care, with bespoke packages for a personalized experience. Off-site guests are warmly welcomed. Bookings essential.

**A** 446 Clifton Road, Te Awanga  
**P** +64 6 875 1900  
**E** [capekidnappers.spa@rosewoodhotels.com](mailto:capekidnappers.spa@rosewoodhotels.com)  
**W** [rosewoodhotels.com/cape-kidnappers](http://rosewoodhotels.com/cape-kidnappers)



## Aroha Helicopters

Napier

Aroha Helicopters - see it all in 30 minutes and be seen doing it. Cruise over Napier, the Art Deco Capital of the World, by helicopter. Fly over Napier Port, the city, and above Marine Parade, at just over 500ft. Chauffeured to HB Airport in a classic car.

**A** 50 Watchman Road, Napier Airport  
**P** +64 27 444 3669  
**E** [bookings@arohahelicopters.com](mailto:bookings@arohahelicopters.com)  
**W** [arohahelicopters.com](http://arohahelicopters.com)

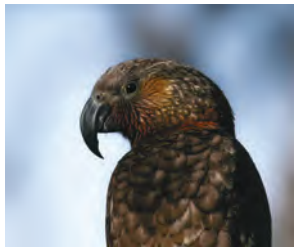


## Cape Sanctuary

Cape Kidnappers

Come & experience Cape Sanctuary - the wildlife restoration project on Cape Kidnappers Peninsula, & Hawke's Bay's best kept secret. Witness the results of two decades of forest, dune & habitat restoration, endangered species & some of the most amazing views around.

**A** Cape Kidnappers Peninsula, Hawke's Bay  
**P** +64 27 548 9566  
**E** [tours@capecsanctuary.co.nz](mailto:tours@capecsanctuary.co.nz)  
**W** [capecsanctuary.co.nz](http://capecsanctuary.co.nz)



## Silky Oak Chocolates

Napier

The Best NZ made chocolates, plus so much more.

Chocolate Shop & Factory, Chocolate Museum, Café, Gift Shop, Pantry Shop plus Gelato.

**A** 1131 Links Road, Napier  
**P** +64 6 845 0908  
**E** [info@silkyoakchocs.co.nz](mailto:info@silkyoakchocs.co.nz)  
**W** [silkyoakchocs.co.nz](http://silkyoakchocs.co.nz)



## Hawke's Bay Farmyard Zoo

Haumoana

A great family outing, 15 minutes from town. Enjoy 3 hectares of limestone paths and gardens with a picnic. Feed the animals, ride a pony, or the "Farmyard Express Train." Customers say we're Hawke's Bay's best value family entertainment, open daily 10am to 5pm.

**A** 32 East Road, Haumoana, Hastings

**P** +64 6 875 0244

**E** hbfarmyardzoo@yahoo.com

**W** farmyardzoo.co.nz



## Boutique Horse Treks

Clive

Experience beach and river rides on well-mannered, well-trained horses using natural horsemanship techniques. Complete beginners to advanced. Ages 5 and up. Small groups. Experience the magic.

**A** 5 Stafford Street, Clive

**P** +64 27 2866 174

**E** stableslodge@mail.com

**W** boutiquehorsetreks.co.nz



## Central Hawke's Bay Museum

Waipawa

Central Hawke's Bay is rich in history, home to one of New Zealand's oldest towns - Waipawa. Step back in time and experience historic collections, photographs and a hands-on experience that take visitors on a unique and insightful journey.

**A** 23 High Street, Waipawa

**P** +64 6 857 7288

**E** chbmuseum@chb.govt.nz

**W** chbmuseum.co.nz



## Te Matau-a-Māui

You'll find place-names throughout Aotearoa which reflect the story of Māui hauling a giant stingray from the ocean – seen in the form of the North Island, 'Te Ika-a-Māui', with the South Island known as 'Te Waka-a-Māui', Māui's canoe. Discover Hawke's Bay's chapter in the story at [tematauamaui.com](http://tematauamaui.com)



The Spring Fling is a series of standout events through September and October, capturing the essence of springtime in Central Hawke's Bay!

From historic homesteads and scenic coastal walks to charming boutique markets, each Spring Fling event offers something truly special. Whether you're seeking adventure, relaxation, or a taste of local culture, there's something here waiting for you.

[thespringfling.nz](https://thespringfling.nz)



CENTRAL HAWKE'S BAY

## Ngā Ara Tipuna

Tamatea Central Hawke's Bay



Ngā Ara Tipuna is a storytelling journey through ancient pā and wetlands in Tamatea Central Hawke's Bay. Visit the site of Pukekaihou Pā, once a thriving Māori settlement. Or use your mobile phone to take a driving tour of seven more sites of cultural and natural significance around

Waipukurau and Takapau. Ngā Ara Tipuna is a multi-award winner at the 2022 Best Designs, Supreme Winner at the 2022 Hawke's Bay Heritage Awards, and Outstanding Project at the 2023 Recreation Aotearoa Awards.

**A** Pukekaihou Pā, Hunter Park, Waipukurau  
**E** [admin@ngaaratipuna.nz](mailto:admin@ngaaratipuna.nz)  
**W** [ngaaratipuna.co.nz](https://ngaaratipuna.co.nz)





## Askerne Estate Winery

Havelock North



Askerne is a boutique, single estate, family owned winery that offers a broad range of wines. We have something for everyone. Tastings, wine flights, a glass of wine, a “build your own” picnic or an ice cream for the kids. Our “build your own picnic” allows you to select your own favorites from our comprehensive range of individually packaged cheeses, meats, olives, seafood, pate and condiments that are locally and internationally sourced. Some vegetarian and gluten free options are available. Enjoy with a glass of stunning Askerne wine in our idyllic vineyard setting. In the busier months we do accept walk-ins for tastings although priority will be given to those who have booked.

For Gourmet Picnics, wine flights or a glass of wine, bookings are not essential but recommended for larger groups on weekends and public holidays. We look forward to sharing our story and space with you. Open daily 10.00am to 5.00pm.

**A** 267 Te Mata Mangateretere Road, Havelock North  
**P** +64 6 877 2089  
**E** [cellardoor.askerne@xtra.co.nz](mailto:cellardoor.askerne@xtra.co.nz)  
**W** [askernewines.co.nz](http://askernewines.co.nz)



## Black Barn Vineyards & Bistro

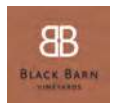
Havelock North



Explore the outstanding wines of Black Barn Vineyards, where many limited-release wines are available exclusively at our Cellar Door and Bistro. Enjoy wine tastings, self-guided flights, and exclusive vineyard releases, or join 'The Club' for home delivery of new wines, priority Bistro reservations, and more. Our artisan winemaking, led by Dave McKee and Becs Coghill, emphasizes quality, depth, and cellaring potential, with the award-winning Barrel Fermented Chardonnay standing out. Black Barn is a must-visit for wine lovers.

At Black Barn Bistro, your dining experience starts with a carefully crafted menu of local, handmade dishes. We proudly source ingredients from Hawke's Bay's passionate growers, pairing them with Black Barn wines and local beers. Join us for a relaxed, memorable meal that celebrates the region's best.

**A** 34 Black Barn Road, Havelock North  
**P** +64 6 877 7985  
**E** [info@blackbarn.com](mailto:info@blackbarn.com)  
**W** [blackbarn.com](http://blackbarn.com)



## Church Road Winery

Taradale



Church Road Cellar Door warmly invites you to explore our bespoke wine tastings, showcasing our award-winning wines and rich heritage. From exclusive cellar door collections to our distinguished TOM wines, there's a tasting for everyone, or join our 90-minute guided experiences to discover more.

Let us show you our secrets on our intimate TOM Experience within the atmospheric surroundings of our private TOM room, nestled among Tom McDonald's original winemaking tanks. Taste three flights of our flagship TOM collection, only produced in exceptional vintages, while enjoying selectively matched savoury bites.

Church Road Winery Restaurant combines premium wines, innovative local cuisine, and bespoke experiences in a picturesque setting. Enjoy a sunlit platter in our park or a seasonal meal made with local ingredients in the Tom McDonald Cellar, all perfectly paired for an unforgettable visit.

**A** 150 Church Road, Taradale, Napier

**P** +64 6 882 3098

**E** [thecellardoor@churchroad.co.nz](mailto:thecellardoor@churchroad.co.nz)

**W** [church-road.com](http://church-road.com)

**CHURCH  
ROAD™**  
HAWKE'S BAY

## Craggy Range

Havelock North



Craggy Range is a family-owned winery and luxury accommodation venue nestled beneath Havelock North's majestic Te Mata Peak. Our Cellar Door offers a variety of wine experiences, allowing you to discover our unique story and explore the spaces that make Craggy Range an unforgettable destination. Immerse yourself in a guided tour of our estate and cellars and taste our award-winning wines, including those from our Prestige collection and rare bottles set aside exclusively for this experience. Along the way, savour light bites perfectly paired with our wines.

Award-winning Craggy Range Restaurant is the culinary heart of our winery. In this intimate and relaxed space, you can indulge in Executive Chef Casey McDonald's regionally inspired menu. Our very own organic kitchen garden and produce sourced from passionate local growers and producers form the cornerstone of our ever-changing menu. Bookings essential.

**A** 253 Waimarama Road, Havelock North  
**P** +64 6 873 7126  
**E** [info@craggyrange.com](mailto:info@craggyrange.com)  
**W** [craggyrange.com](http://craggyrange.com)





## Mission Estate Winery

Taradale



Experience the heritage of New Zealand's oldest winery, Mission Estate. Nestled in beautiful gardens amidst the Taradale hills, you can delight in tastings within La Grande Maison, hearing tales of its 1851 origins. We look forward to sharing our wine and our rich history with guests in a beautiful setting that embraces the old and new.

You can also enjoy sweeping views of Napier City and the coast beyond at the Mission Estate Restaurant. With only the freshest local produce used, it is an unforgettable experience whether you're on our sun-drenched terrace or inside for an intimate dining experience.

Cellar Door: 9am - 5pm, Sun 10am - 4:30pm. Restaurant: Open daily from 10am until late. For reservations please call us on 06 845 9354 or email [restaurant@missionestate.co.nz](mailto:restaurant@missionestate.co.nz).

**A** 198 Church Road, Taradale, Napier

**P** +64 6 845 9350

**E** [cellardoor@missionestate.co.nz](mailto:cellardoor@missionestate.co.nz)

**W** [missionestate.co.nz](http://missionestate.co.nz)

  
**MISSION**  
SINCE 1851

## Smith & Sheth

Havelock North



In the heart of Havelock North village, Smith & Sheth offers the perfect escape for wine lovers. Indulge in a seated tasting flight featuring wines from Smith & Sheth, Pyramid Valley and Lowburn Ferry guided by knowledgeable sommeliers, or unwind in the

wine lounge with a glass from a continually evolving wine list of global and local gems. For the more curious, embark on a sensory wine exploration across three New Zealand wine regions in our immersive Heretaunga Wine Studio.

**A** #2 The Courtyard, 4 Te Aute Road, Havelock North

**P** +64 6 650 5550

**E** [bookings@smithandsheth.com](mailto:bookings@smithandsheth.com)

**W** [smithandsheth.com](http://smithandsheth.com)

SMITH & SHETH

## Cellar 495

Hastings



Cellar 495 combines neighbourly warmth and hospitality with world-class wine expertise at Hastings' newest wine bar, bistro, tasting room, and wine shop - all led by the world's 495th Master of Wine, Michael Henley. Our wine selection represents the finest from around the globe, served alongside

seasonal cuisine that captures the spirit of New Zealand.

Recipient of Cuisine Good Food Awards One Hat. Winner of Hawke's Bay Hospitality Awards Outstanding Chef and Outstanding Wine Experience.

**A** 319 Heretaunga Street East, Hastings

**P** +64 6 870 6308

**E** [enquiries@cellar495.co.nz](mailto:enquiries@cellar495.co.nz)

**W** [495wineselect.co.nz/cellar-495](http://495wineselect.co.nz/cellar-495)



## Rosewood Cape Kidnappers

Te Awanga



We invite you to dine at Rosewood Cape Kidnappers and enjoy exceptional, locally sourced cuisine during your visit to Hawke's Bay. Head Chef James Honore crafts seasonal dishes using garden-grown vegetables, fruits, and

herbs, along with local produce. With daily-changing menus, the freshest ingredients are showcased at their peak. Off-site guests are warmly welcomed. Bookings essential.

**A** 446 Clifton Road, Te Awanga  
**P** +64 6 875 1900  
**E** [capekidnappers@rosewoodhotels.com](mailto:capekidnappers@rosewoodhotels.com)  
**W** [rosewoodhotels.com/en/cape-kidnappers](http://rosewoodhotels.com/en/cape-kidnappers)

ROSEWOOD  
CAPE KIDNAPPERS  
HAWKE'S BAY

## St Georges Restaurant

Havelock North



St Georges is a family-owned, farm-to table restaurant and boutique wedding & event venue in Havelock North, Hawke's Bay. Whether feasting inside or dining alfresco, you've never tasted food like this before. Think vibrant flavours, generous portions & fresh produce.

Our menus are graced by only the best ingredients, growing 90% of our own produce, our farm to table offering is as authentic as you can get. Whatever the occasion - St Georges Restaurant is the perfect place to celebrate the big, the small and all of life's beautiful in-betweens.

**A** 452 St Georges Road South, Havelock Nth  
**P** +64 6 877 5356  
**E** [reservations@stgeorgesrestaurant.co.nz](mailto:reservations@stgeorgesrestaurant.co.nz)  
**W** [stgeorgesrestaurant.co.nz](http://stgeorgesrestaurant.co.nz)

St Georges

## Casa Ahuriri

Napier



An authentic Italian restaurant. Run and owned by passionate Italians who will provide you with a dining experience that will take you to Italy. We serve the freshest products and homemade quality food, respecting the authenticity of our traditional

recipes, with a bit of innovation and personal twist, and using as many local suppliers as we can. A great selection of Italian and New Zealand wines is just what you will have for the perfect experience at Casa.

**A** 68 West Quay, Ahuriri, Napier  
**P** +64 6 834 1188  
**E** [bookings@casaahuriri.nz](mailto:bookings@casaahuriri.nz)  
**W** [casaahuriri.co.nz](http://casaahuriri.co.nz)



## Te Mata Figs

Havelock North



Te Mata Figs is a specialist fig grower and artisan creator of award winning fig products. The Figgery Café & Shop brings figs to life in everyday baking and food (along with local, seasonal ingredients) in our chefs' gluten free creations. Join us to enjoy great food, coffee

and beautiful surroundings, and of course stock up on your favourite figgy products (or buy online). Fresh figs available end December to mid-January; mid-February to end April. Open: Monday to Friday 8am - 3:30pm; Saturday & Sunday 9:30am - 3:30pm.

**A** 205 Napier Road, Havelock North  
**P** +64 27 476 4777  
**E** [info@tematafigs.co.nz](mailto:info@tematafigs.co.nz)  
**W** [tematafigs.co.nz](http://tematafigs.co.nz)





## Clearview Estate Winery & Restaurant

Te Awanga

The legendary long-lunch winery al-fresco destination since 1991. Renowned Estate grown wines. Innovative menu celebrates fresh produce & kaimoana of Aotearoa. lunch | groups | functions | weddings

**A** 194 Clifton Road, Te Awanga  
**P** +64 6 875 0150  
**E** restaurant@clearviewestate.co.nz  
**W** clearviewestate.co.nz



## De La Terre Winery

Sherenden

Only 20 minutes drive from Taradale or Hastings, we produce an extensive range of wines in our earth brick winery. Enjoy a wine tasting hosted by the winemaker, then lunch in our café courtyard (bookings are essential for lunch). Refer to our website for opening times.

**A** 1426 Taihape Road, Sherenden  
**P** +64 6 874 3224  
**E** wines@delaterre.co.nz  
**W** delaterre.co.nz



## Linden Estate Winery

Eskdale

Experience outstanding wine tastings in our architecturally designed Cellar Door, a platter and glass of wine in the sun overlooking the vines or a walk amongst the sculptures. Linden Estate Winery offers a unique and memorable experience, visit us today.

**A** 347 State Highway 5, Eskdale  
**P** +64 6 836 6806  
**E** support@lindenestatewinery.co.nz  
**W** lindenestatewinery.co.nz



## Oak Estate

Hastings

Oak Estate is a boutique cellar door and bistro, where we specialise in crafting delicious lunch dishes using locally sourced ingredients. We offer a carefully curated selection of Oak Estate wines, handcrafted from grapes grown both on-site and within the Bridge Pa Triangle.

**A** 403 Ngatarawa Road, Bridge Pa, Hastings  
**P** +64 27 406 7716  
**E** bookings@oakestatewines.co.nz  
**W** oakestatewines.co.nz



## Paritua Vineyards and Winery

Hastings

Experience Paritua, renowned organic single estate winery in Hawke's Bay's Bridge Pa sub-region. Our Cellar Door offers a unique opportunity to taste our exceptional wines while soaking in the beauty of our vineyards and strikingly designed winery.

**A** 2112 Maraekakaho Rd, Bridge Pa  
**P** +64 6 874 9180  
**E** [cellardoor@paritua.com](mailto:cellardoor@paritua.com)  
**W** [paritua.com](http://paritua.com)



## Te Mata Estate

Havelock North

Te Mata is NZ's original fine wine estate, with every step of winemaking undertaken on site - from vine to glass - at the foothills of Te Mata Peak. Stop by our Cellar Door or book a private tasting to try out world-renowned wines, all grown and produced right here in Hawke's Bay.

**A** 349 Te Mata Road, Havelock North  
**P** +64 6 877 4399  
**E** [cellardoor@temata.co.nz](mailto:cellardoor@temata.co.nz)  
**W** [temata.co.nz](http://temata.co.nz)



## Trinity Hill

Hastings

Trinity Hill's founders recognised the potential of the Gimblett Gravels Winegrowing District and in 1993, the winery became one of the region's early pioneers, planting grape vines on a barren plot which continues to produce exceptional wines today. Cellar Door open Wed-Sun, 11am-5pm.

**A** 2396 State Highway 50, Hastings  
**P** +64 6 879 7778  
**E** [cellardoor@trinityhill.com](mailto:cellardoor@trinityhill.com)  
**W** [trinityhill.com](http://trinityhill.com)



## Unison Vineyard

Hastings

Sip, taste & relax at the Artisan Cellar Door. Sip & taste great Whites, Rosés, Bubbles & Gimblett Gravels Reds, have bite to eat. Or relax and stay in our onsite accommodation. Check out our opening times at [www.unisonvineyard.co.nz](http://www.unisonvineyard.co.nz).

**A** 2163 State Highway 50, Hastings  
**P** +64 6 879 7913  
**E** [info@unisonvineyard.co.nz](mailto:info@unisonvineyard.co.nz)  
**W** [unisonvineyard.co.nz](http://unisonvineyard.co.nz)



## Giant Brewing

Havelock North

Family friendly brew pub with a full menu and 12 taps of beer both brewed on-site, and sourced from other NZ guest breweries. Some great Hawke's Bay wines also on offer.

**A** 6 Treachers Lane, Havelock North  
**P** +64 27 483 3321  
**E** [info@giantbrewing.co.nz](mailto:info@giantbrewing.co.nz)  
**W** [giantbrewing.co.nz](http://giantbrewing.co.nz)



## Peak House

Havelock North

Whether you're dropping in for a coffee, a bite to eat, or a drink from the bar, you'll enjoy some of the best views in Hawke's Bay. The space is perfect for celebrating special occasions or hosting corporate events. We can't wait to see you soon!

**A** 357 Te Mata Peak Road, Havelock North  
**P** +64 6 280 5474  
**E** [hello@thepeakhouse.co.nz](mailto:hello@thepeakhouse.co.nz)  
**W** [thepeakhouse.co.nz](http://thepeakhouse.co.nz)



## Brown Dog

Haumoana

Located in the heart of the Cape community you'll find your local coffee stop, Brown Dog. We've been grinding daily since 2016. We are passionate about people, community, eating well & of course, coffee. Come & say hi, get a drink & bite to eat & enjoy the ocean view.

**A** 12 Clifton Road, Haumoana  
**P** +64 22 639 2841  
**E** [browndogesspresso@hotmail.com](mailto:browndogesspresso@hotmail.com)  
**W** [browndogesspresso.com](http://browndogesspresso.com)



## Thai Silk Restaurant

Hastings

Our selection of healthy and appetising dishes is second to none. In a relaxed and comfortable setting, enjoy the very best of Thai cuisine at our Thai Silk Restaurant in Hastings. You will experience the authentic taste of Thailand with our range.

**A** 601 Karamu Road North, Hastings  
**P** +64 6 878 3718  
**E** [thaisilkhastings@gmail.com](mailto:thaisilkhastings@gmail.com)  
**W** [thaisilkrestaurant.co.nz](http://thaisilkrestaurant.co.nz)



# Hawke's Bay Trails



The Hawke's Bay Trails – one of 23 Great Rides of New Zealand – boast 200km of easy-riding cycle trails across Napier City and Hastings District, connecting more than 50 local destinations with expansive views and landscapes through the heart of New Zealand's Food and Wine Country.





# Itineraries?

## *Try Hawke's Bay 'Recipes'*



Here in New Zealand's Food and Wine Country, great recipes are in our DNA. From daytrips to multi-day journeys, these recipes for your Hawke's Bay holiday are sure to rise.

**Be sure to share your experiences:**  
@hawkesbaynz #foodandwinecountry



## The Artisans

Get up close and personal with some of the region's greatest producers.

**DURATION**  
**1 DAY**

**CATEGORY**  
**FOOD**

## Get amongst the Great Outdoors

A journey through the Hawke's Bay's diverse landscapes offers both adrenaline-pumping and soft adventure activities.

**DURATION**  
**2 DAYS**

**CATEGORY**  
**GREAT OUTDOORS**

## The 48-hour Hawke's Baycation

Two full-to-the-brim days, bursting with Food and Wine Country goodness.

**DURATION**  
**2 DAYS**

**CATEGORY**  
**THE BEST BITS**

# Find Out More



Visit us at **hawkesbaynz.com**



**hawkesbaynz**



**hawkesbaynz**



Call in to our local isites:

**Hastings & Havelock North 0800 427 846**

**Napier 06 834 1911**

**Wairoa 06 838 7440**

